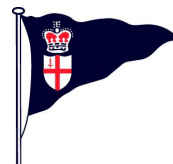


Royal Southern Yacht Club

Royal London Yacht Club



Deauville Yacht Club



Yacht Club de France



56th

COWES-DEAUVILLE RACE

SAILING INSTRUCTIONS AND GENERAL INFORMATION

For IRC, FFV OSRIS rated boats, Classe Figaro 1, Cruiser/Sail & Power

All times are BST (UT + 1 hour) - unless otherwise stated

Tide Time Portsmouth Friday 25th May 2018

HW 09:20 BST (4.1m)

All entrants and their crews are invited to enjoy the facilities of the Royal Southern, Royal London and Deauville Yacht Clubs.

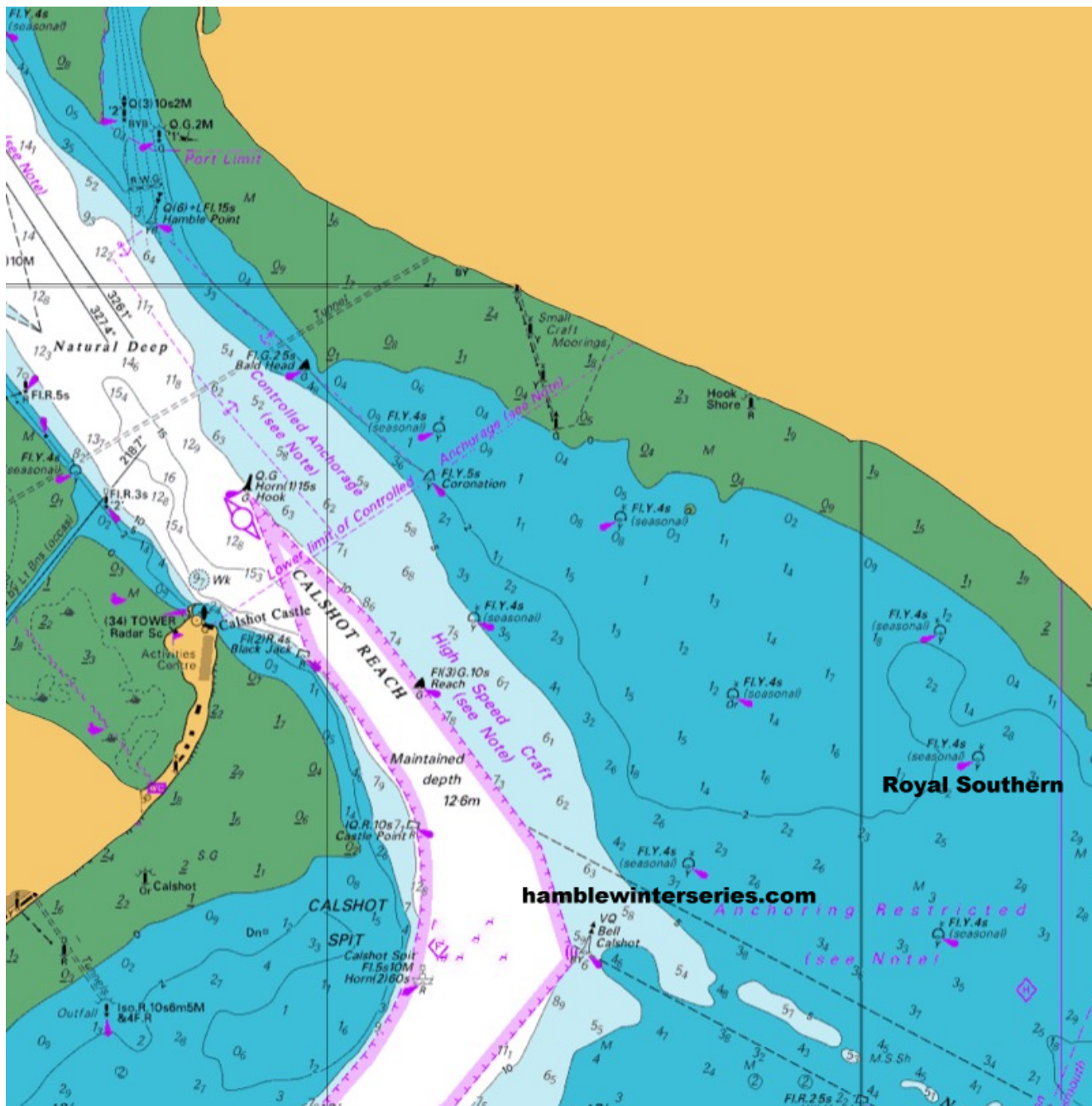
GENERAL INFORMATION

Boats entered and not starting or retiring whilst in The Solent or nearby shall notify as soon as possible: Royal Southern Yacht Club, Tel: +44 (0) 2380450300 or the START TEAM on +44 7702166499.

Boats retiring from the race later shall notify as soon as possible the FINISH TEAM (call sign 'Deauville Finish', VHF Channel 72 or Tel: +33 (0) 2 31 88 38 19 or +44(0) 7702 166 499. Email: philip@pgage.co.uk.

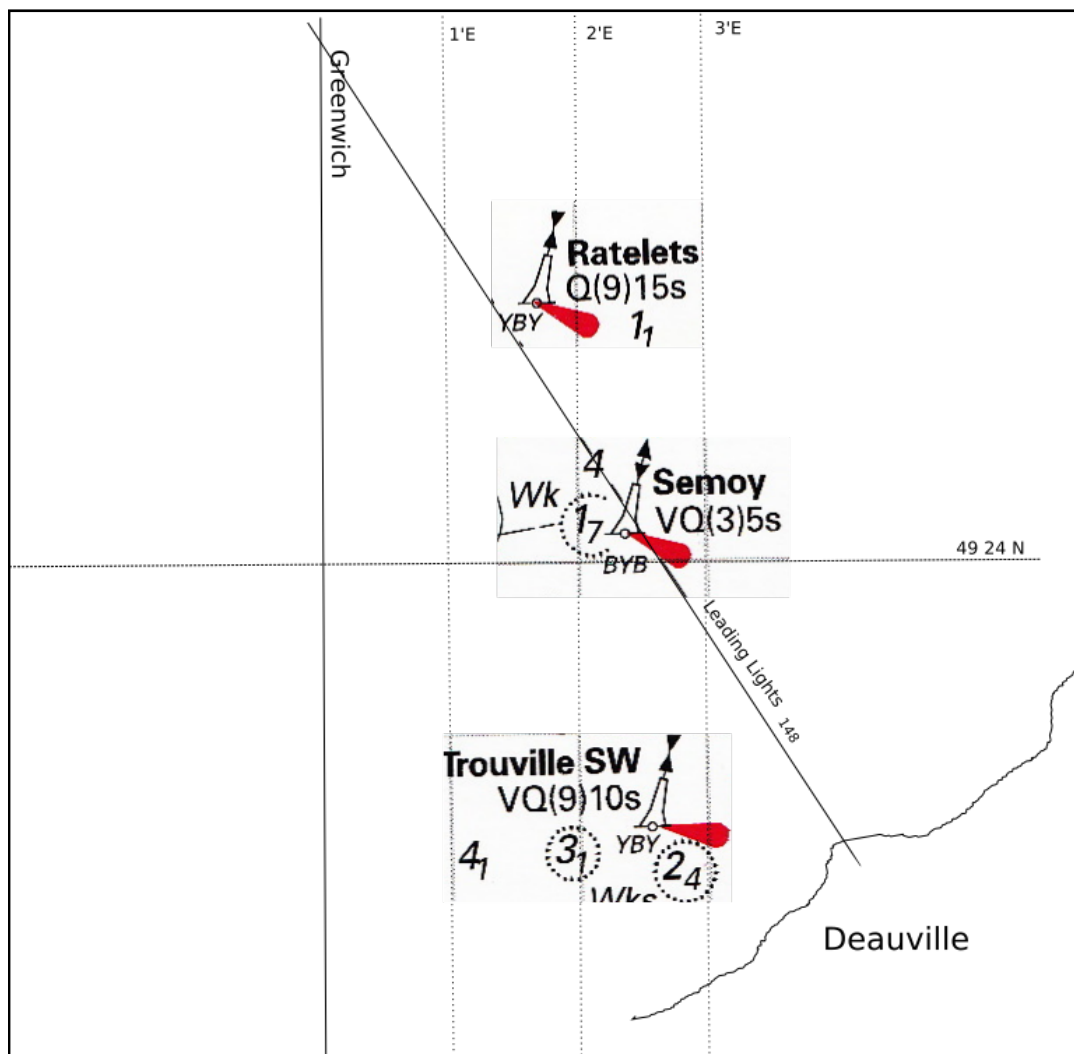
REGISTRATION DOCUMENTS WARNING

All boats sailing in French waters MUST have their ships registration papers on board.



Central Solent starting Area

Note that the starts will be at on a falling tide: navigators should exercise caution leaving the Hamble or Cowes harbour.



Deauville and Finish at Semoy

See the photograph of the entry to the Toques river in the appendix.

BERTHING

Boat owners have a choice of berthing in Deauville in the inner basin or in the outer Port du Plaisance Marina. There is a limitation of 4m depth in the inner basin and numbers there will be limited to around 30 boats. Up to 80 boats may berth in the outer Port du Plaisance Marina at Deauville with a draft limitation up to 3.2m. Deeper draft boats may berth in Le Havre. Note that at low water there is less than 1m depth of water at the entrance of the Touques River.

BERTHING FEES

Berthing In Deauville will be free for Saturday and Sunday.

DEAUVILLE LOCK TIMES 2018 - LOCAL TIMES {UT (GMT) + 2, BST+1}.

	Open/ ouverture	Close / fermeture	Open/ ouverture	Close / fermeture
Friday 25 th			18:22	23:57
Saturday 26 th	06:49	12:20	19:10	00:53
Sunday 27 th	07:36	13:11	19:54	
Monday 28 th	08:17	13:55	20:33	

SAILING INSTRUCTIONS

1. RULES

1. Racing will be governed by the rules as defined in The Racing Rules of Sailing (RRS).
2. Between the hours of sunset and sunrise the International Rules for the Prevention of Collisions at Sea or Government Right of Way Rules shall replace the corresponding RRS Part 2 and navigation lights shall be displayed.
- 1.3 When near commercial shipping in the Solent, boats shall not enter the Moving Prohibited Zone (1000 metres ahead and 100 metres from the side or stern of vessels over 150 metres long) and shall not cause any obstruction to ships using the main channels and the ports. Boats may use engines in accordance with RRS 42.3(h) in an emergency to keep clear of a ship. Such engine use shall be reported to the race committee in writing before the time limit for protests.

2. CONDITIONS OF ENTRY

2.1 GENERAL

The Statement of Risk is set out in the Notice of Race and is deemed to have been read and understood by all entrants. The safety of a boat and her entire management, including insurance, shall be the sole and inescapable responsibility of the owner/competitor racing the yacht. The establishment of these Sailing Instructions in no way limits or reduces the complete responsibility of the owner/competitor for his crew, his boat and his management thereof.

- 2.2 All boats shall have, whilst racing, a minimum crew of at least two persons.
- 2.3 Boats may be inspected before or after the race at the discretion of the committee.
- 2.4 Ratings will be in accordance with the RORC/UNCL IR2000 Rating System (IRC) ,FFV Osiris or Cruiser/Sail&Power. Ratings for the Sail&Power division are governed by paragraph 16.
- 2.5 Under exceptional circumstances the Race Committee may permit a boat to use sails carrying a distinguishing number other than that required under RRS - Appendix G, having applied in writing to the race committee.
- 2.6 Flags when racing:
 - 2.6.1 IRC Boats shall wear on a backstay a clearly visible Int. Code Pennant 1. Sail & Power /Club boats shall wear on a backstay IC Flag C. Boats in the Figaro division shall wear IC Flag F. Other HN Osiris boats need wear no flag.
 - 2.6.2 Boats whilst racing shall not wear an ensign, or at the masthead, a triangular pennant or burgee.

3 SAFETY

- 3.1 Adequate personal buoyancy for all crew members shall be worn or carried in the boat at all times.
- 3.2 All boats shall comply with the requirements of the current WS Special regulations governing minimum equipment and accommodation standard Category 3 Monohull with Liferaft. AIS is strongly recommended.
- 3.3 Any boat which, having started, retires from the race or does not complete the race for any reason, shall notify the Deauville FINISH TEAM on +33 (0) 2 31 88 38 19 or +44 (0) 7702 166 499

4 COMMUNICATION WITH COMPETITORS

- 4.1 Notices to competitors will be posted on the official notice boards in the Royal Southern Yacht Club and the Royal London Yacht Club.
- 4.2 Signal flags at the start will be displayed from the committee vessel.

- 4.3 Should it be necessary to postpone or abandon the race, the appropriate signal will be made from the committee vessel, the Royal Southern Yacht Club flagstaff and, if possible, at the Royal London Yacht Club.
- 4.4 Any changes in sailing instructions will be advised at the 09:30 briefings and shall be advised over the VHF at regular intervals from 11:00
- 4.5 At the start will be by VHF Ch 72, call sign 'Royal Southern' or call the START TEAM on +44 7702 166 499.
- 4.6 At the finish will be by VHF Ch 72, call sign 'Deauville Finish'. Leading yachts should call 'Deauville Finish' five miles from the Finish Line. The Deauville Finish Team may be contacted on mobile +44 (0) 7702 166 499. Yachts should maintain a dual (listening) watch on Ch 16 & 72.

5 IDENTIFICATION

- 5.1 Before the warning signal boats shall pass close to the committee vessel, on the side away from the starting line, DISPLAYING HER SAIL NUMBER AND CLASS FLAG and SHOWING THEIR FLARE PACK until she receives a visual acknowledgment from the race committee. The penalty for an infringement of this SI shall be at the discretion of the protest committee.
- 5.2 Boats that are to be unable to perform the identification check before the warning signal shall do this after the starting signal. The committee vessel will remain on station for 5 minutes after the start

6 DIVISIONS

Division 1 IRC, Osiris and Cruiser/ Power & Sail,
Division F Figaro.

7 Starts

7.1 There will be a single start for all divisions.

Schedule

FLAG	WARNING SIGNAL	PREPARATORY SIGNAL	PREPARATORY REMOVED	START
F	12:05	12:06	12:09	12:10

Boats in the Sail & Power Division may not use engines until 20 minutes after the start.

7.2 Starting Line

The starting line will be between spars wearing orange flags on the Committee Boat "John Dory" and the rigid inflatable boat "Sir Michael".

7.3 The position of the start will be displayed on notice boards at the briefings, and any change will be announced on VHF channel 72.

7.4 The boats forming the starting line will stay on station until 12:15. Any boat that is on the pre course side of the line at that time will be deemed to have started correctly.

8 COURSES

8.1 Depending on the wind direction one of the fixed marks in the Solent may be used as the first (windward) mark.

The choice of Eastward or Westward course will be notified on notice boards displayed at the briefings. The first (windward) mark to be used and its rounding side will also be displayed on these notice boards.

8.2 The EASTWARD COURSE: After the first mark PASS BETWEEN NO MANS LAND FORT AND HORSE SAND FORT, leave BEMBRIDGE LEDGE BUOY to starboard then to the finishing line off Deauville (100 nm approx)

8.3 The WESTWARD COURSE: After the first mark Round BRIDGE BUOY to port, then to the finishing line off Deauville. (115nm approx)

9 RECALLS

- 9.1 Sail numbers of those boats individually recalled may be announced on VHF Ch 72 - See SI 4. Boats that, when recalled, do not return will, without a hearing, be penalised 5% of her elapsed time (minimum 10 minutes) unless she gains a significant advantage in which case she shall be disqualified. Any boat so penalised shall be entitled to a hearing on request.
- 9.2 After a general recall is signalled, RRS 29.2 is changed in that a new PREPARATORY signal will be made for that class one minute after the removal of the First Substitute.
- 9.3 Changing RRS 41, 42.1 & 45; a boat may not necessarily be off her moorings and may receive outside assistance or use her engine after her preparatory signal so long as she is not within half a mile of the starting line and has not started.

10 FINISHING

- 10.1 The finishing line will be to the East of LA SEMOY buoy: 49° 24' .136 N, 00° 2' .383 E. Boats shall cross the finishing line from north to south within 1 cable (200m approx) of the buoy. Boats shall record their own finishing time and the boats ahead and astern, if possible. The time shall be recorded when the LA SEMOY (VQ 3) buoy bears 270° true. After finishing call 'Deauville Finish' immediately on VHF Ch 72 giving boat name, sail number and finishing time and send a text message to **+44 77 02 16 64 99** with this information. Sail and Power boats should also add their motoring time to the message.

Boats should pay particular attention to distinguish La Semoy from other marks, particularly Ratelets (Q 9) to the North East.

- 10.2 Fast boats should call the finishing team on VHF Channel 72 when they are about 5 miles from the finish. Such calls may not be acknowledged.
- 10.3 The time limit for all boats shall be 22:59 (BST) 23h59 (French time) on Saturday 26th May 2018. Boats not finishing by this time will be scored DNF. This amends racing rule 35 and Appendix A. The Deauville Lock closes at 00:53 (French Time) (11:53 BST).
- 10.4 Boats should send a representative to the Secretary's office at Deauville Yacht Club to register their arrival in the port as soon as possible after docking.

11 ALTERNATIVE PENALTIES

RRS 44.3 scoring penalty will apply. The minimum penalty will be three places.

12 PROTESTS

- 12.1 Protests lodged before the start relating to a rating or handicap will be heard either at the Royal London Yacht Club or the Royal Southern Yacht Club.
- 12.2 Protests shall be lodged within TWO hours of the protesting boat finishing in Deauville and shall be delivered in writing to the Secretary's Office at the Deauville Yacht Club preferably on a protest form available from the Secretariat. This time limit may be extended at the discretion of the protest committee. Protests will be heard as soon as possible after they have been lodged and protestors shall ensure that all necessary witnesses are available at the hearing. It is the duty of the protestor to inform the protestee of his intention to protest.

13 DECLARATIONS

Declarations shall be delivered to the race committee at the Deauville Yacht Club as soon as possible after finishing the race and within two hours of locking into the inner harbour or marina.

14 RESULTS

A provisional list of results will be posted at Deauville Yacht Club as soon as possible. The final results will be posted on the Royal London and Royal Southern websites.

15 PRIZES

15.1 See the Notice of Race for the list of trophies.

15.2 The prize giving will be at the Deauville Yacht Club at 10h30 Local Time (09:30 BST) on Sunday 27th May 2018. All entrants and their crews are invited to attend. Prize winners are to appoint a representative to receive their prize if no crew member is able to be present.
Prize giving will be followed by a country style buffet at the Deauville Yacht Club.

16 SAIL AND POWER

16.1 On application to the Royal Southern Yacht Club Boats will be allocated two ratings, the Sail Only rating and the Sail and Power rating.

16.2 Boats that do not use their engine will be scored using their Sail Only rating.

16.3 Boats that use their engine for any time at all will be scored using their Sail and Power rating and may use their engine without any penalty for up to half the elapsed time of their race.
The elapsed time is calculated as the greater of the actual elapsed time or double the time under engine. As an example with an elapsed time of 10 hours and 6 hours under engine would be counted as 12 hours.

16.4 Declarations

At the end of the race boats shall declare the time in minutes for which the engine was used.

16.5 Part 2 of Racing Rules of Sailing will be replaced in its entirety during periods of engine use. Boats using their engines, or that have used them within the previous 5 minutes shall keep clear of boats that are not using their engines. At night boats under engine shall display a steaming light until 5 minutes after they have ceased to use their engine. Any dispute between boats will be resolved by the protest committee, and for boats using engines will be determined using the IRPCAS.

17 CREW LISTS

Before starting all boats shall lodge a list of the names and addresses of all persons on board, and the details of a person ashore who may be contacted in the case of an emergency. This shall be on made on the website <https://yachtscoring.com/emenu.cfm?eid=4669>

18 Translation. In the event of any discrepancy the English text of these sailing instructions will prevail.

Appendix 1

Entry into the River Toques at low water.

